

Crown Connection



www.CrownConstructionInc.com

Recipient of 17 National Awards



WINTER 2011

Happy New Year!

It's a new year and time for home resolutions. Did you know that January is bath safety month and that 80% of home accidents occur in the bathroom? How does yours measure up? Or for that matter, the rest of your home? We're all a year older (although we won't always admit it). It's a good idea to think about making our homes adaptable to 'aging-in-place'. Since Crown Construction is trained and certified to address these issues, it would be a good idea to find out how to improve your home. Call today.

Aging-In-Place – at the workplace?!

Usually we think of 'aging-in-place' in relation to our homes. Have you thought about that term in the work place? The years have gone by quickly for many of Crown's team members. For instance, Jim Wavle has been with Crown for 23 years, Kevin Allyn for 22 years, Rob Luce and Vladimir Leshkiv (not pictured) for 14 years, Joann Walker for 13 years, Joanne Sterling (not pictured) for 11 years and Brian Short for 10 years. Since Crown Construction's inception in 1987, we are proud of the number of employees that are committed to serving you wholeheartedly and upholding the highest level of Crown's standards. They really do knock our socks off!

Joann Walker
CFO



Rob Luce
Lead Foreman



Jim Wavle
Designer/Estimator

Kevin Allyn
Lead Foreman



Winter Trivia

Fact: About 70 percent of winter storm related deaths occur in automobiles. The rest are primarily due to heart attacks from over exertions such as shoveling heavy snow or from hypothermia caused by over exposure to the cold. When winter storms strike, stay indoors and keep warm and dry. Avoid over-exertion. Your heart is already working hard in the cold to keep your body warm.

Fact: An inch of ice is heavier than wet snow and is hazardous enough to cause power lines and trees to come down.

Fact: Ten (10) inches of snow melts down to about an inch of liquid rain.

Fact: Hail is a chunk or stone of ice dropped from a thunderstorm. Sleet is frozen rain. Freezing rain is liquid rain that freezes to a surface such as the road or a tree.

The good news? We are one day closer to spring!

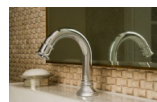
Bath Trends*

*Source: www.e-build.com

Throughout the '90s and into the new millennium, the bathroom transformed from a utilitarian space into a spa-like retreat, with whirlpools, his-and-hers sinks, and elaborate shower systems becoming must-haves in new housing developments. Conservation also came to the forefront in the form of low-flow, and now high-performance, toilets and faucets. Here's a look at the major bath trends from the past two decades.



Toilet evolution. Of all the bathroom trends of the past few years, the commode has perhaps evolved the most significantly, with noticeable changes in both style and operation. Though white toilets continue to be the norm, the early and mid-90s saw plenty of unique colors and designs, such as this black model from Kohler.



Hands-free faucets. Electronic-eye "hands-free" faucets began showing up in high-end residential projects in the late 2000s, as improved technology made them work more reliably than their testy predecessors.



Low-flow fixtures. Showerheads like Moen's Envi are the latest fixtures to sport the WaterSense label.

Accessible options. Though universal-design products have been showing up in bathrooms for decades, more recently the trend is expanding as baby boomers opt to age in place. To keep them from feeling "old," designs are becoming more stylish and integrated with other products, such as Delta's new Transfer Tub.

Something to ponder for the new year... if we fill our hours with regrets of yesterday and with the worries of tomorrow, we have no today in which to be thankful.

From Old School to New School....

Here is a kitchen transformation that is something to write home about! Larry Thomas and Maria Thorn of Marathon, are absolutely thrilled with the new look of their kitchen. ***"There isn't a day that goes by that we don't think about what a great investment this was for us. We just enjoy being in the room", expressed Larry.***



After Larry and Maria met with John (Lafian) and designer, Brian Francis, the meeting of the minds created an absolutely eye-catching kitchen design. ***"The time the company invested in us up front even before the work began was wonderful – very much worth it."*** Note that the stove is now angled in the corner – adding to the character. New hazelnut designer cabinets, complete with an "appliance garage" and spice rack, were installed with wrought iron pulls and old world knobs. A black egranite top mount double-bowl sink enhances the beauty. Notice the stainless steel dish drawer (dishwasher) next to the sink. Since Larry and Maria are empty nesters, this totally meets their needs allowing for an additional storage drawer

below. Even their hanging lamp, which was carried over from the old kitchen, has taken on some notoriety from visitors.

"It came together as we envisioned it," said Larry. "During the process, we did have a couple of changes and the foreman, Rob (Luce), did some custom work that actually worked better than originally planned. The quality is wonderful. It was such a great experience for us."

Larry and Maria... it was our pleasure to work with you both. Your kitchen is beautiful and inviting. May you enjoy your new kitchen for many years to come.



Lovin' the Lower Level

All of us in one way or another, are rediscovering our 'homesteads' as places of retreat and entertainment. We're looking for ways to make our homes the place where we feel energetic, peacefully contented and secure. Defining just such a space might be as close and easy as your basement. Basements are often forgotten and neglected. Finishing it provides a simple and cost effective solution to the rejuvenation your home needs.

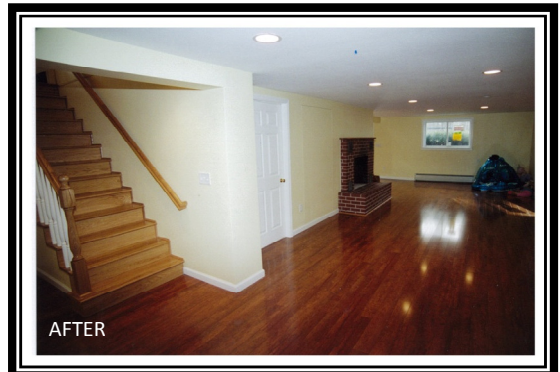
Tom and Kim Cramer, Ithaca, hired Crown Construction to take their typical NY basement to that new level. The pre-existing basement was described by the homeowner as ***"scary, having tremendous water damage and lots of mold. A much-needed sump pump with a nice cover for easy access was installed along with dehumidifiers running with hoses permanently plugged into nozzles. With the water issues addressed, the air quality is so much better," said Tom.***



The footprint of their basement was large enough to divide it into a family room and laundry room leaving plenty of space for a storage area. The laminate "wood" flooring was installed in both the family and laundry rooms. Dated wood paneled walls were updated with drywall and painted a cheery yellow throughout. At the top of the staircase, an attractive door with windows invites the eye to adore the beauty of the lower level.

"Remodeling a basement is the most unobtrusive construction project I can think of. It doesn't impede the rest of your living space nor interfere with day-to-day living. The improvements made added so much equity to our home," said Tom. "Whenever we hear of someone that's thinking about remodeling, we always refer them to Crown Construction."

Tom and Kim... your basement was transformed into an absolutely stunning living area. Thank you for putting your trust and confidence in Crown Construction once again.



Looking to the Future

A famous quote was heard recently at one of our meetings; you might recognize it. ***"Good, better, best. Never let it rest... till the good get better and the better get best."*** That's what we're doing here at Crown Construction by looking at our systems and evaluating methods of improvement. As a result, we'd like to make our website (www.crownconstructioninc.com) a 'stomping ground' for our customers. The customer survey feedback will be the first of step in this direction. Down the road, we will put that survey on our website for you to complete and then with just a few clicks of the mouse, it'll be off your desk and onto ours. So easy. Rest assured, however, for those that do not have computer access or do not feel comfortable with this process, at your request, we will be glad to mail these surveys to you. These customer surveys are important as we move to improve. Taking the time to complete them is truly appreciated.